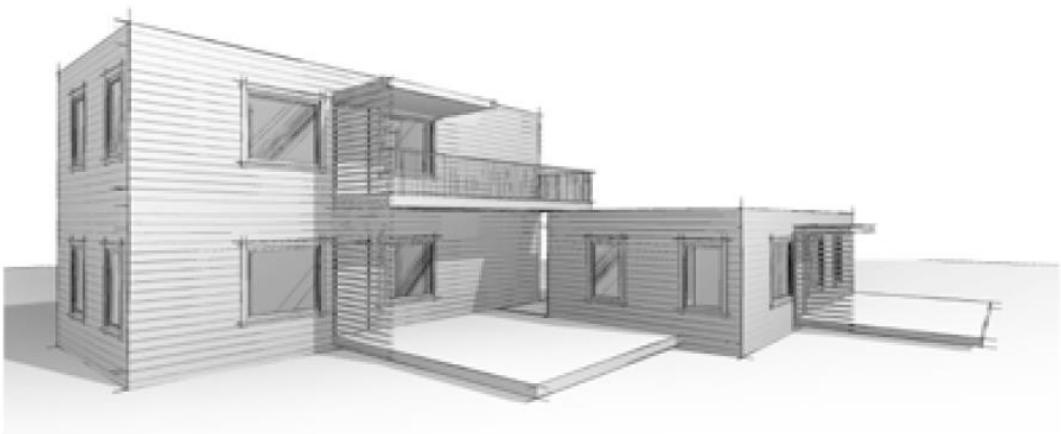


		<p>Contact:  <a href="mailto:Info@jmccwing.com">Info@jmccwing.com</a>          Or call ask for Sales          Or leave message          612 232 6651</p>
---	--	--

**Factory Direct Shipping Containers – NEW - NEVER USED - Containers**  
**The only place where you can get one or many NEW containers**  
**Select all options including colors and custom size containers**  
**Factory Direct Custom Container Buildings - Your Design**



**Basic Containers: 10' - 20' – 20'HC – 40' – 40'HC – 45'HC – 53'HC**  
**Other Options: Refrigeration – Flat Rack – Open Top or Side – Ultra High**  
**Ultra Wide – Dry Goods – Insulated - Top Loading – Internal Walls**  
**See other sheets for customer color charts, data sheets and pricing**